


UNIT 2

WORK AND STUDY

1 BEFORE YOU WATCH

a  Work in pairs. Answer the questions. Talk about your answers.

- 1 What kind of animals do you like? Make a list.

- 2 Where do you see the animals?

- 3 Would you like to have the animals in your home as pets? Why / Why not?

b Look at the pictures. Match the pictures with the words in the box.

tiger squirrel monkey penguin camel meerkat praying mantis jellyfish spider



1 _____



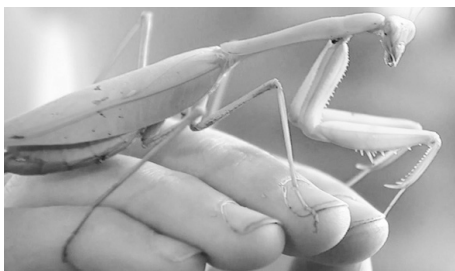
2 _____



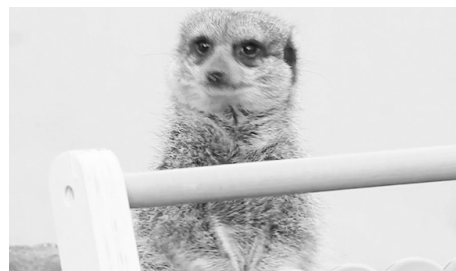
3 _____



4 _____



5 _____



6 _____



7 _____



8 _____

c Look at the picture. What animals in 1b are (a) *easy* or (b) *difficult* for zookeepers to count? Why? Write a or b below the pictures in 1b.

d  Talk with a partner. Compare your ideas in 1c.



UNIT 2

WORK AND STUDY

2 WHILE YOU WATCH

a Watch the video. What do the zookeepers do? Check (✓) the jobs you see.

- | | |
|---|--|
| <input checked="" type="checkbox"/> count the animals | <input type="checkbox"/> feed the animals |
| <input type="checkbox"/> weigh the animals | <input type="checkbox"/> wash the animals |
| <input type="checkbox"/> measure the animals | <input type="checkbox"/> play with the animals |

b Watch again. Are the sentences true (T) or false (F)?

- | | |
|---|-------|
| 1 London Zoo begins each new year by counting the animals. | T / F |
| 2 The number of animals at the zoo always changes. | T / F |
| 3 It's easy to count the number of meerkats. | T / F |
| 4 Suzanna, the zookeeper, knows the names of the penguins. | T / F |
| 5 In August, the zookeepers weigh the animals. | T / F |
| 6 Zookeepers like playing with squirrel monkeys. | T / F |
| 7 Zookeepers use meat to move dangerous animals. | T / F |
| 8 London Zoo shares information with other zoos and scientists. | T / F |

c Watch again. Check (✓) the other animals you see in the video.

- | | | |
|----------------------------------|---------------------------------|------------------------------------|
| <input type="checkbox"/> frog | <input type="checkbox"/> lion | <input type="checkbox"/> bear |
| <input type="checkbox"/> goat | <input type="checkbox"/> zebra | <input type="checkbox"/> crocodile |
| <input type="checkbox"/> giraffe | <input type="checkbox"/> spider | <input type="checkbox"/> elephant |

d Watch again. Which numbers do you hear? Choose a or b.

- | | | |
|---|------------------------------|------------------------------|
| 1 Different kinds of animals at London Zoo | a 600 | b 700 |
| 2 Number of animals at London Zoo | a more than 19,000 | b more than 90,000 |
| 3 Number of praying mantises this week | a more than 115 | b more than 150 |
| 4 Number of squirrel monkeys that play together | a five | b six |
| 5 Jae Jae the tiger | a one and a half meters long | b two and a half meters long |

3 AFTER YOU WATCH

a Plan a visit to London Zoo. Answer the questions so they are true for you.

- 1 What animals do you want to see the most and the least at the zoo? Make a list.

Most

Least

_____	_____
_____	_____
_____	_____
_____	_____

- 2 Who do you want to go to the zoo with? _____

c Work in groups. Talk about your plans to visit London Zoo. Compare your lists. Do you want to see the same or different animals?